

**META**

Storage Solutions

# META THE STORAGE SYSTEM





# META THE STORAGE SYSTEM

## ■ META – the warehousing technology professional

We are a medium-sized company headquartered in Germany in the Sauerland region, deeply rooted by tradition and our employees, the cornerstones of our success.

We serve the United States of America from our offices located in Atlanta, GA, quickly responding to your national project needs.

## Our product range includes:

- Shelf units consisting of bolted or boltless shelving systems
- Wide-span racks
- Pallet racks
- Multi-tier racking systems
- Dynamic storage racks for piece goods and pallets, through to automatically operated shelving systems
- Mobile shelving
- Cantilever racks



■ **META shelving systems** – built using just two basic components (frame and shelf), an extensive range of accessories is available. This allows to create either single shelf rows or complex systems for all types of small parts storage applications.

The boltless shelving systems can be set up quickly without tools.

In order to adapt shelves to the stored goods, shelf heights can be adjusted in steps of 25 mm, and the shelves have a load capacity of 80 – 330 kg.



## ■ META pallet racking systems

are the optimal solution for storing pallets and piece goods.

The typical loading devices are Euro pallets and mesh box pallets. Goods can be stored longitudinally or cross-wise as required.

Numerous accessories are available for these pallet racks. Fitted with steel panels, grating a chipboard decks, also heavy and bulky cardboard boxes as well as piece goods can be stored similar to a shelving system.

These pallet racking systems are available in many different sizes. With a great variety of possible combinations, they can be adapted to any warehouse.





■ **META long-span racking systems** – the boltless META wide span rack or the bolted META MINI-RACK® – provide an alternative to the pallet rack and have many different applications across all sectors.

They are excellent for storing bulky and unusually large and/or awkward-shaped items in commerce, trade, and industry. Both systems are available with chipboard or steel panel decks.



■ **META cantilever racks** are the suitable solution for storing all kinds of long goods horizontally or vertically, and for storing sheet goods and panels.

META provides two cantilever rack solutions, including the META ATLAS® ST with welded cantilever arms, and the boltless META MULTISTRONG®. These can be used to construct small compact rows of racks for light to medium-heavy long goods, or anything up to cantilever rack towers for heavy sections and sheets.

Both of these pallet racking systems are available in many different sizes. With a great variety of possible combinations, they can be adapted to any warehouse.

■ The term **dynamic** applies to the following META systems:

**META MULTILINE® L and S gravity flow racks**

**META MULTIBLOC® movable shelving, pallet racks and cantilever racks**

**META HIGH-CLIP® AKL**  
(automatic small parts store)

With these shelving systems, META provides even more solutions for your warehouse.



■ **META steel platforms** – building upwards on existing storage areas is the perfect way for workshops and machine rooms to double or triple the available storage space. You can reduce costs by using your existing space more efficiently.

META structural steel platforms are made to order, i.e. constructed and produced to meet your specific requirements.





# META THE STORAGE SYSTEM



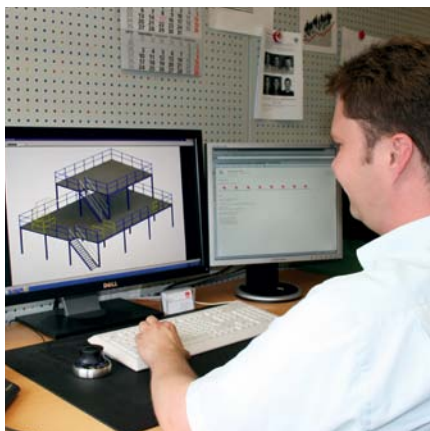
We have been involved in metal working processes for more than 100 years. Our core products: the CLIP shelving systems and WIDE-SPAN racks are produced here and successfully marketed far across the borders of Europe. META trains its own junior staff and thus lays the foundations for future success. With our **"Made in Germany"** quality seal, we don't just want to advertise. We also feel it is a duty and a requirement to provide you with quality products, both now and in the future.



## The META 5-year warranty

In addition to a **2-year warranty** required by German law, we provide an **extended 5-year quality warranty** on our shelving systems. **We have confidence in the quality of our products because: ...**

- ... we have our products and production processes inspected regularly by our own personnel and by independent inspecting authorities.
- ... structures and production processes have been approved by the GS symbol and the RAL-RG 614 quality label, both important especially in the German market.
- ... we are continuously renewing our production systems and use the very latest production technologies.



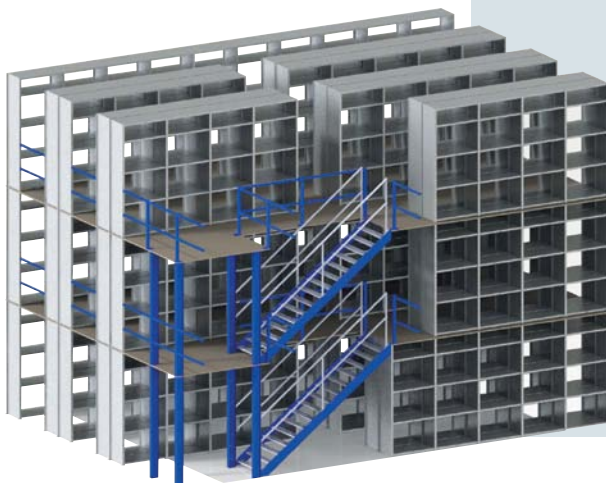
## ■ Planning Service

Consultancy is a major priority at META. We can advise you in selecting the right racking system, or the optimal combination of different systems. To do this, your product structures and storage & picking procedures are inspected on site.

Our employees are well familiar with many trade sectors and can work out individual solutions, with the result that the storage facility is always customized to your requirements.

Our project engineers will be pleased to create a planning proposal for you, with an individual project proposal. With our current drawing programs, we can produce customer-specific CAD drawings.

**Planning, production, supply and assembly – all from one source.**



## ■ DIN EN ISO 9001 : 2008 certified

META offers you storage facilities of the highest quality, which are produced in machining centres using modern PPS and CAD/CAM technologies. As a leader in technology, META is certified to the **DIN EN ISO 9001: 2008** standard for warehousing and operating facilities.

## ■ RAL Certified META products are also certified to the strict RAL guidelines.



This means that they are constantly being checked and monitored by an independent inspecting body. And we welcome these independent inspections.

The function of the RAL (German Institute for Quality Assurance and Certification) is to ensure the high quality of products and services. As the umbrella organisation for the present 139 quality associations, only the RAL is allowed to award the quality label in Germany.

## ■ GS Testing & Inspection



Our products, of course, also carry the **GS symbol**, and are regularly checked and inspected by the neutral MPA (materials testing office) in Germany.